



Ottawa River
Regulation
Planning Board

Commission de planification
de la régularisation
de la rivière des Outaouais

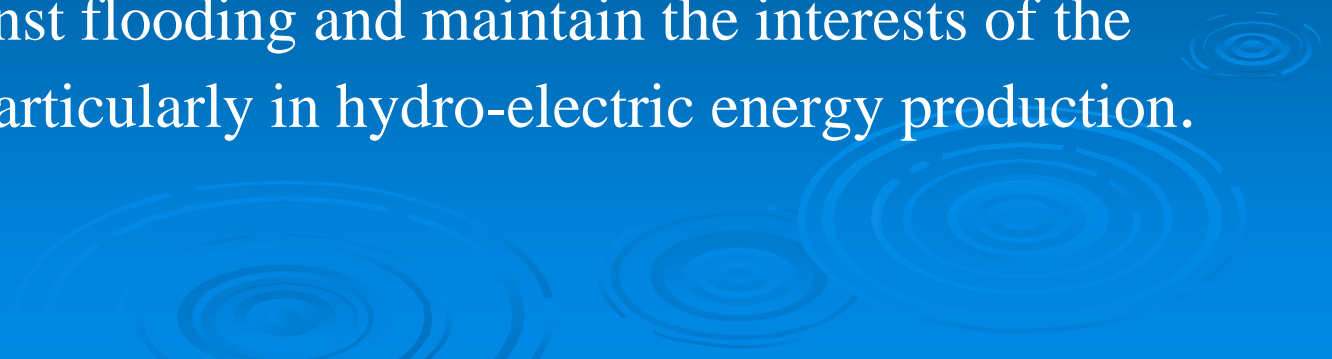
Ottawa River

Integrated Management of the Principal Reservoirs

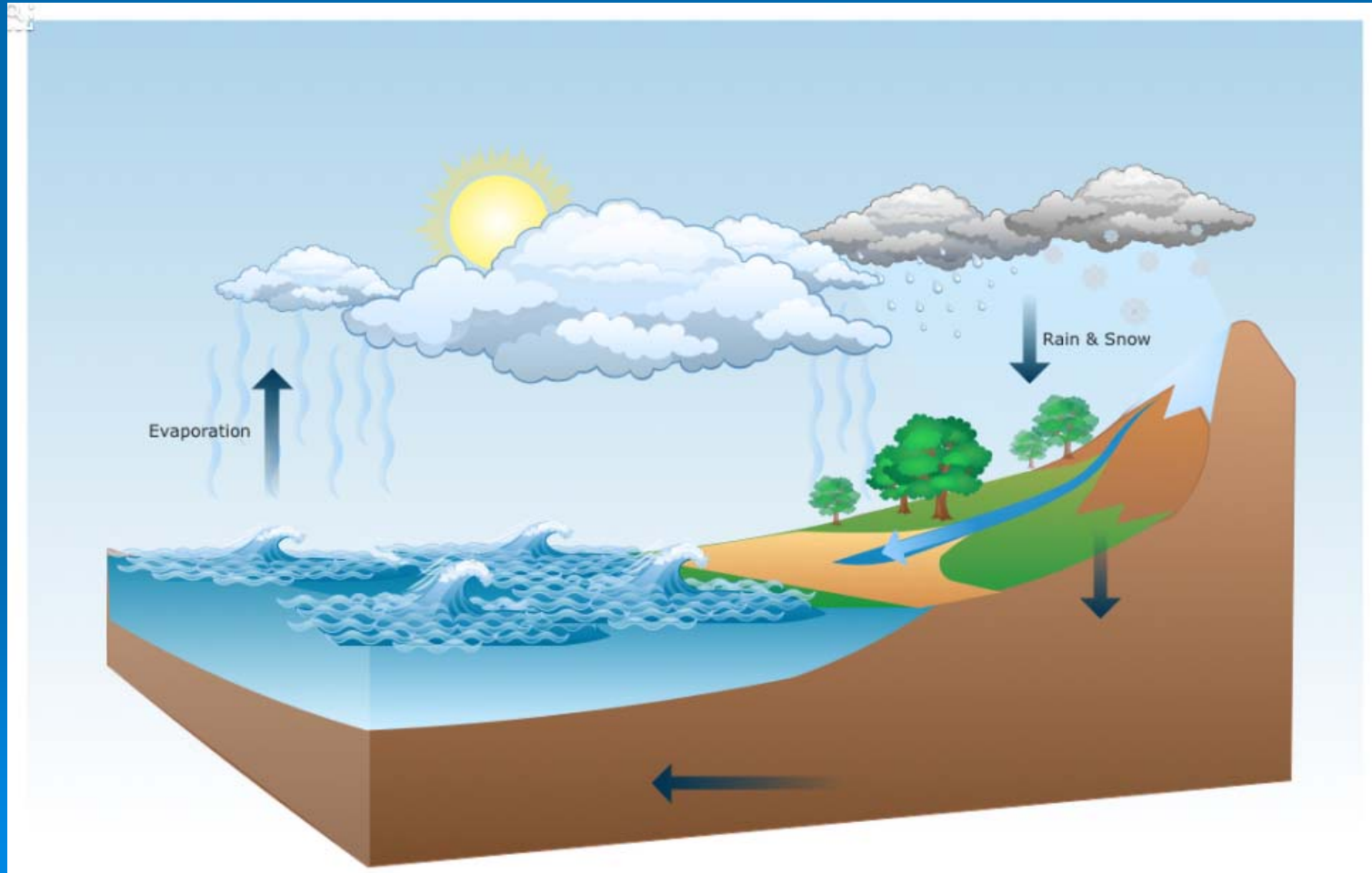
Michael Sarich
Senior Regulation Engineer

Manon Lalonde
Executive Engineer

Board Mandate

- The Ottawa River Regulation Planning Board was established in 1983 to ensure integrated management of the flow from the principal reservoirs of the Ottawa River Basin.
 - The goal of this integrated management is to provide protection against flooding and maintain the interests of the various users particularly in hydro-electric energy production.
- 

The Water Cycle



Ottawa River Watershed



SPRING FLOODS VARY

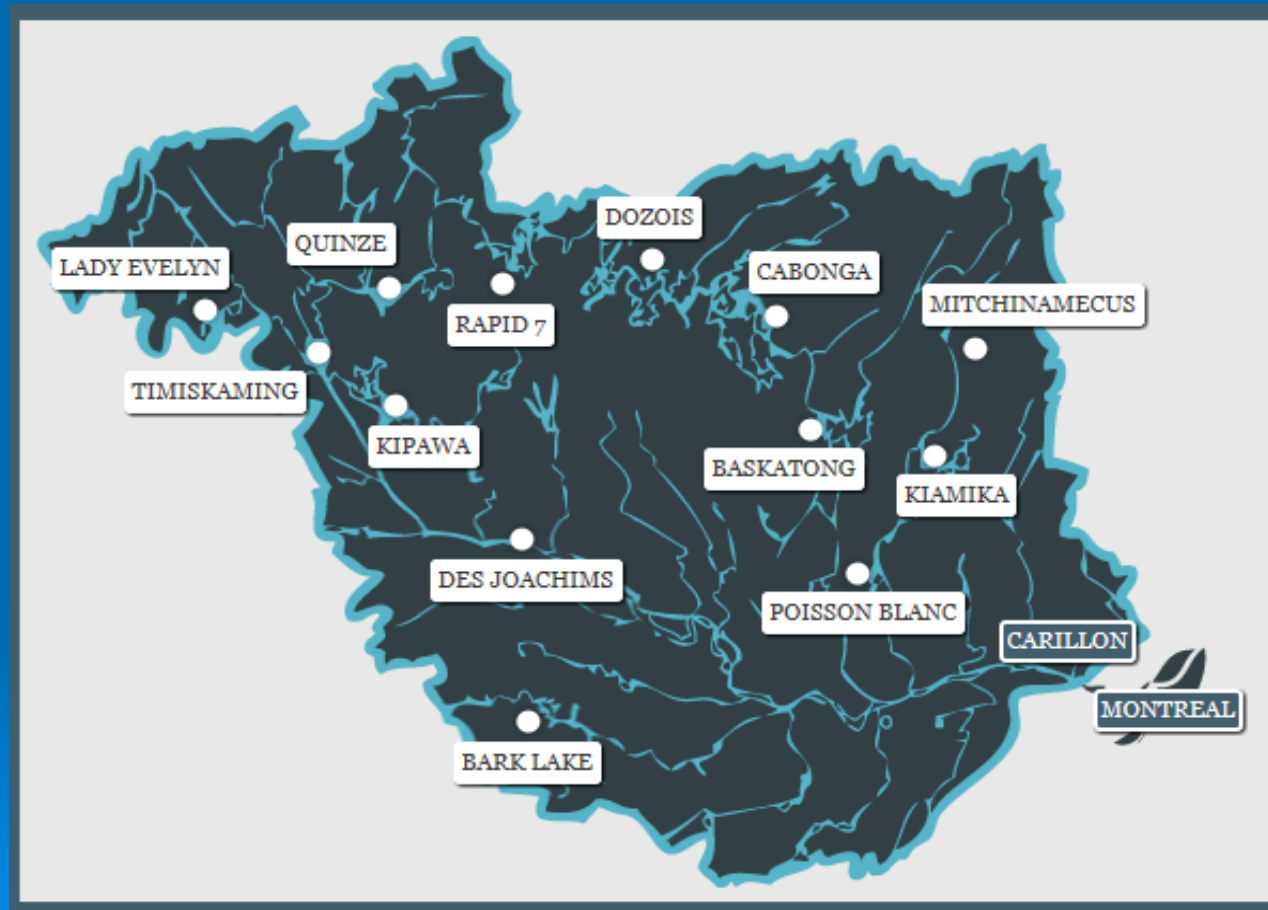
1950-2016:

Maximum daily flow
at Carillon dam
varied between
3,635 and 8,295 m³/s

In 2017:

Maximum daily flow
on May 8th
~ 8,860 m³/s

Principal Reservoirs



The 1983 Canada-Ontario-Quebec Agreement

- *Established:*

- Ottawa River Regulation Planning Board
- Ottawa River Regulating Committee
- Ottawa River Regulation Secretariat

Board Members

Quebec

Ministère du
Développement durable,
de l'Environnement, et
de la Lutte contre les
changements climatiques

Hydro-Québec

Canada

Public Services
and Procurement
Canada

Canadian Coast Guard

Environment and
Climate Change Canada

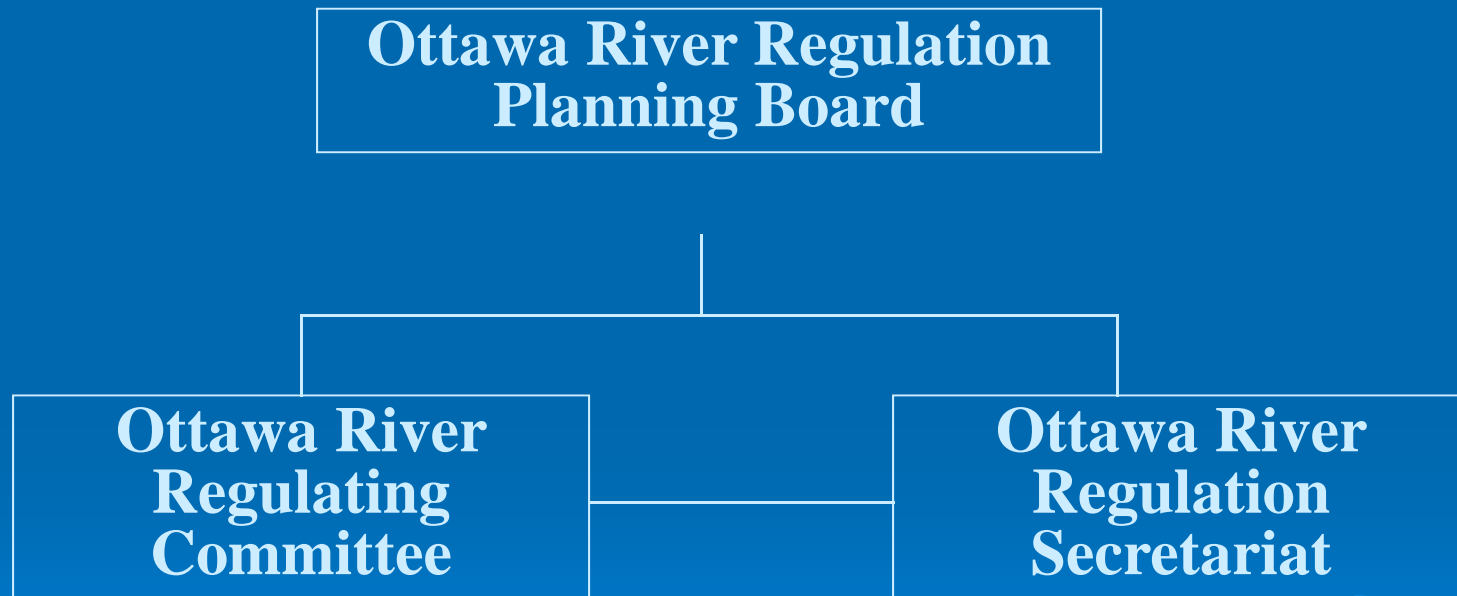
Ontario

Ministry of Natural
Resources and
Forestry

Ontario Power
Generation



How is the Board Structured?



Regulating Committee Members

Quebec

Ministère du Développement
durable, de l'Environnement et de
la Lutte contre les changements
climatiques

Hydro-Québec

Canada

Public Services and
Procurement Canada


Ontario

Ontario Power
Generation

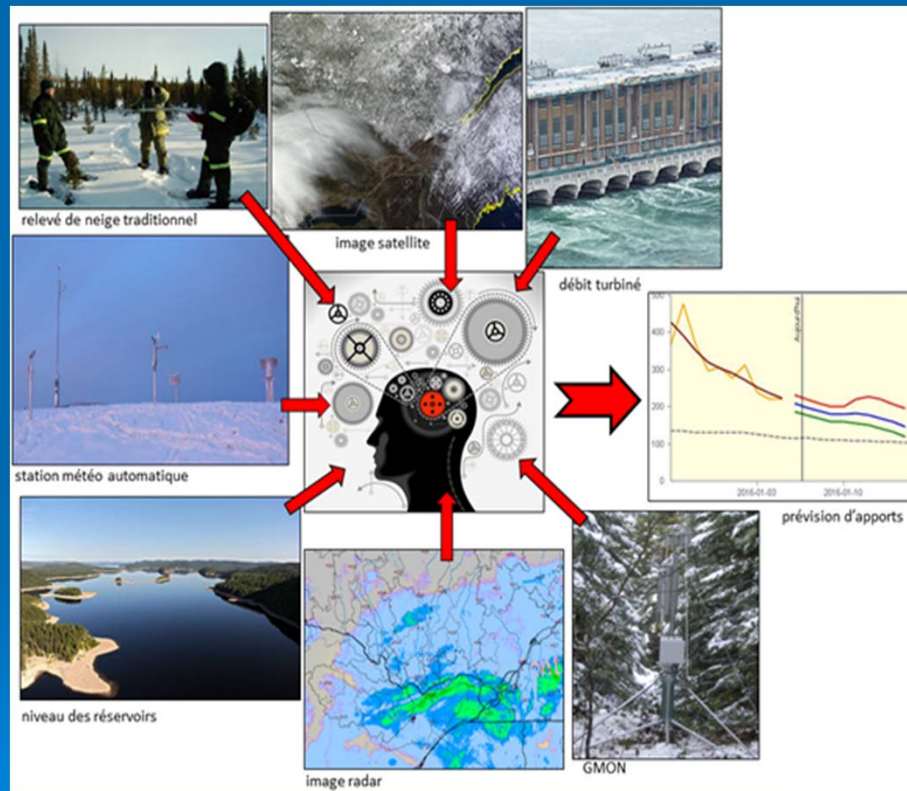
The Agreement signed in 1983 established that :

« Membership on the Regulating Committee shall be limited to Operators. »

Daily Work of Regulating Committee

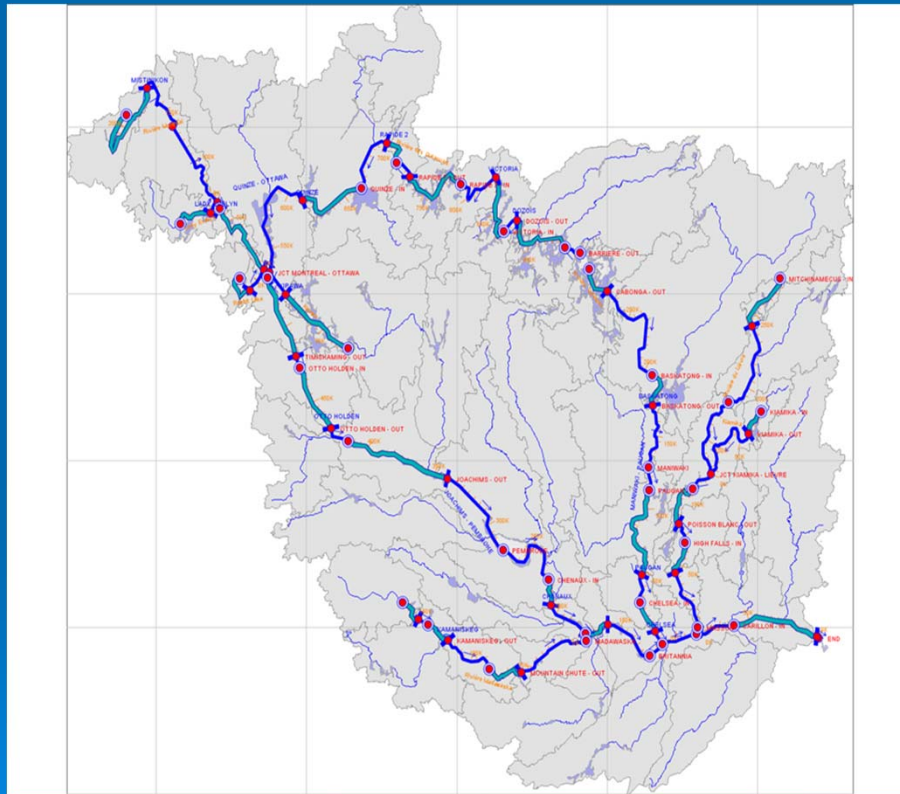
- Assess how much water
 - snowmelt, rainfall runoff?
 - Assess water levels and flows
 - focus is on flood plains – areas vulnerable to flooding
 - Share data among Committee members
 - to optimize their flow management of reservoirs
 - Disseminate results to provincial authorities / public
- 
- The bottom right corner of the slide features a decorative graphic of several concentric, light blue ripples, resembling water droplets or waves, set against the solid blue background.

Assess How much Water



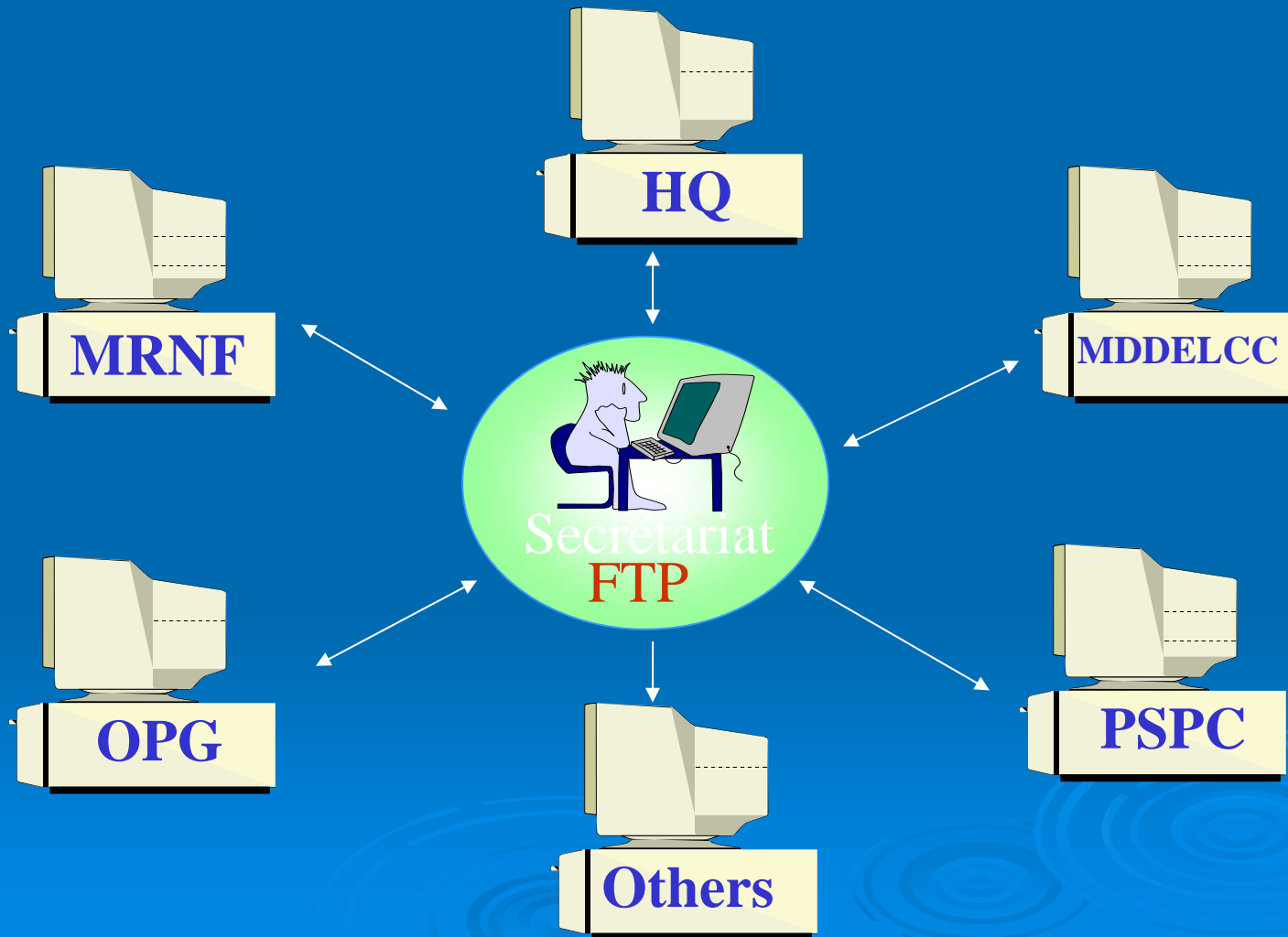
mathematical
model of
watershed
hydrology

Assess Water Levels and Flows



mathematical
model of river
hydraulics

Sharing of Data – Optimization



Disseminate Flow Forecasts to Provincial Authorities

- MNRF Surface Water Monitoring Centre
 - Participate in daily conference calls & obtain model results
 - Transfer flow forecasts to provincial authorities responsible for flood advisories
- Secretariat brief local MNRF authorities
 - Participate in freshet calls
 - MNRF local District offices, municipal authorities
 - Conservation Authorities (Mississippi, Rideau Valley, South Nation)

Disseminate Flow Forecasts



Ottawa River
Regulation
Planning Board

Commission de planification
de la régularisation
de la rivière des Outaouais

OTTAWA RIVER WATER LEVELS

OTTAWA/GATINEAU, Friday April 28, 2017 –The Ottawa River Regulating Committee cautions that water levels and flows along the main stem of the Ottawa River between Mattawa and the Montreal region will remain high for a sustained period of time. Well above normal April precipitation combined with snowmelt runoff have resulted in recent peak levels not seen in the last 20 years in many locations. Current meteorological forecasts are calling for additional rainfall of 30-60 mm over much of the Ottawa River basin. This additional precipitation is expected to once again increase levels that had been in decline.

Current weather forecasts predict very significant precipitation beginning Sunday, April 30th into Monday, May 1st. These weather conditions could cause rapid increases in levels and flows between Mattawa and the Montreal region. The increase in levels and extent of possible flooding will depend on the amount of precipitation received, the tracking of the storm as well as the amount of snowmelt in the north.

With current forecasts, northern snowmelt runoff combined with precipitation is expected to fill most northern reservoirs in the next few days. As a result, the capacity to retain additional runoff from the headwater areas in the north will be diminished. Residents of low-lying areas and communities located in areas prone to flooding along the Ottawa River are advised to monitor river conditions closely by consulting the daily update of river conditions on the ORRPB website at <http://www.ottawariver.ca> and checking with their local provincial agency that is responsible for issuing flood advisories.

Disseminate Flow Forecasts – *NEW!*

OTTAWA RIVER
FORECAST FLOOD LEVELS
*** 2017-05-02 12:00:00 AM

	CURRENT LEVEL		FORECAST PEAK LEVEL		CHANGE (cm) **
	DATE-TIME	LEVEL (m) *	DATE	LEVEL (m) *	
MATTAWA	2017-05-02 10:00	153.78	2017-05-02	153.80	2
PEMBROKE	2017-05-02 8:00	112.90	2017-05-02	112.95	5
LAC COULONGE	2017-05-02 8:00	108.21	2017-05-04	108.35	14
LAC CHATS	2017-05-02 9:00	75.59	2017-05-05	75.65	6
LAC DESCHENES/BRITANNIA	2017-05-02 10:00	60.00	2017-05-05	60.10	10
GATINEAU/HULL MARINA	2017-05-02 9:00	44.25	2017-05-06	44.40	15
THURSO	2017-05-02 9:00	42.87	2017-05-06	43.00	13
GRENVILLE/HAWKESBURY	2017-05-02 9:00	42.19	2017-05-06	42.35	16

* All levels are in reference to mean sea level

** CHANGE is the forecast change in level in centimeters

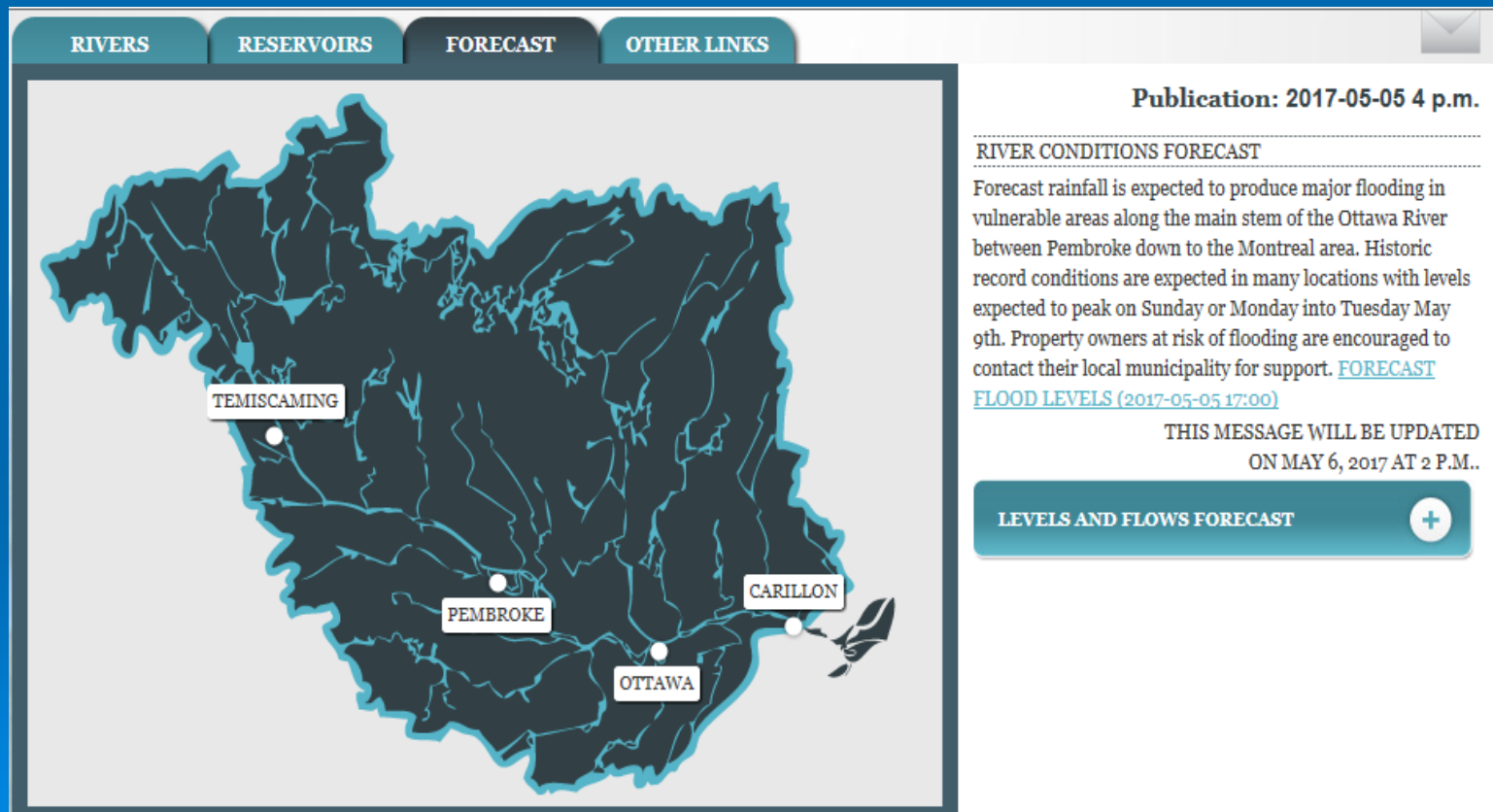
*** This forecast will be updated as warranted

Warning:

- Water level forecasts are subject to a high degree of uncertainty and should be used as an approximate reference only.
- The flow rate and actual levels can change rapidly without warning, particularly during the freshet period. We advise those using bodies of water to exercise caution and to follow safety rules at all times.

Table with
forecast peak
levels - updated
twice daily
starting May
2nd

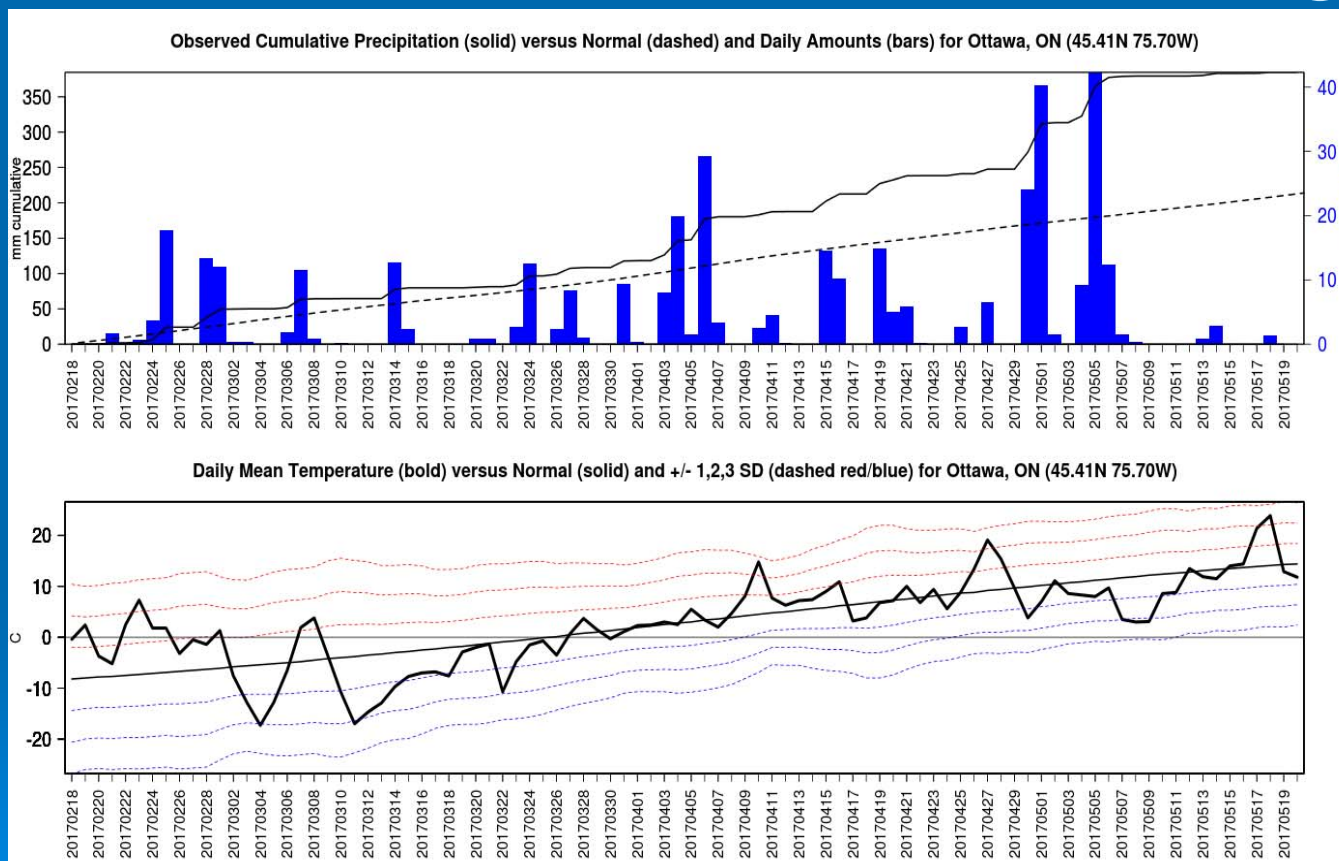
Disseminate Flow Forecasts



Exceptional Spring Flood Lower Reach

- Chats Lake level within 9 cm of 1951 record level
- Historic flooding from Lac Deschenes down to Montreal
 - Highest level observed at Britannia beach (since start of record - 1915)
 - Highest level in Gatineau (since start of record -1964)
 - Largest flow rate at Carillon dam (since construction -1962)
- Exceptional floods occurred in 20's, 50's, 70's, and this year
 - Other exceptional floods are to be expected in the future

Twice as much Rain this Spring



Source: Internal Product, Meteorological Service of Canada, ECCC

Want to help?

- Tell us how we can improve the Website
 - What information did you find useful?
 - What additional information would you like to see?
 - Did you find the information to be clear?
- Give us your name and coordinates
 - We will send you a questionnaire
 - May seek your participation in focus group



Information

Current Water levels
Toll free number 24 hours per day

Ottawa-Gatineau

613-995-3443

613-995-3455

English

French

Outside

1 800 778-1246

1 800 778-1243

Flow forecasts
during freshet

Web Site: **<http://www.ottawariver.ca>**

Ottawa River Regulation Secretariat
373 Sussex Dr, Block E1, Room E120

Ottawa, Ontario

Email : secretariat@ottawariver.ca