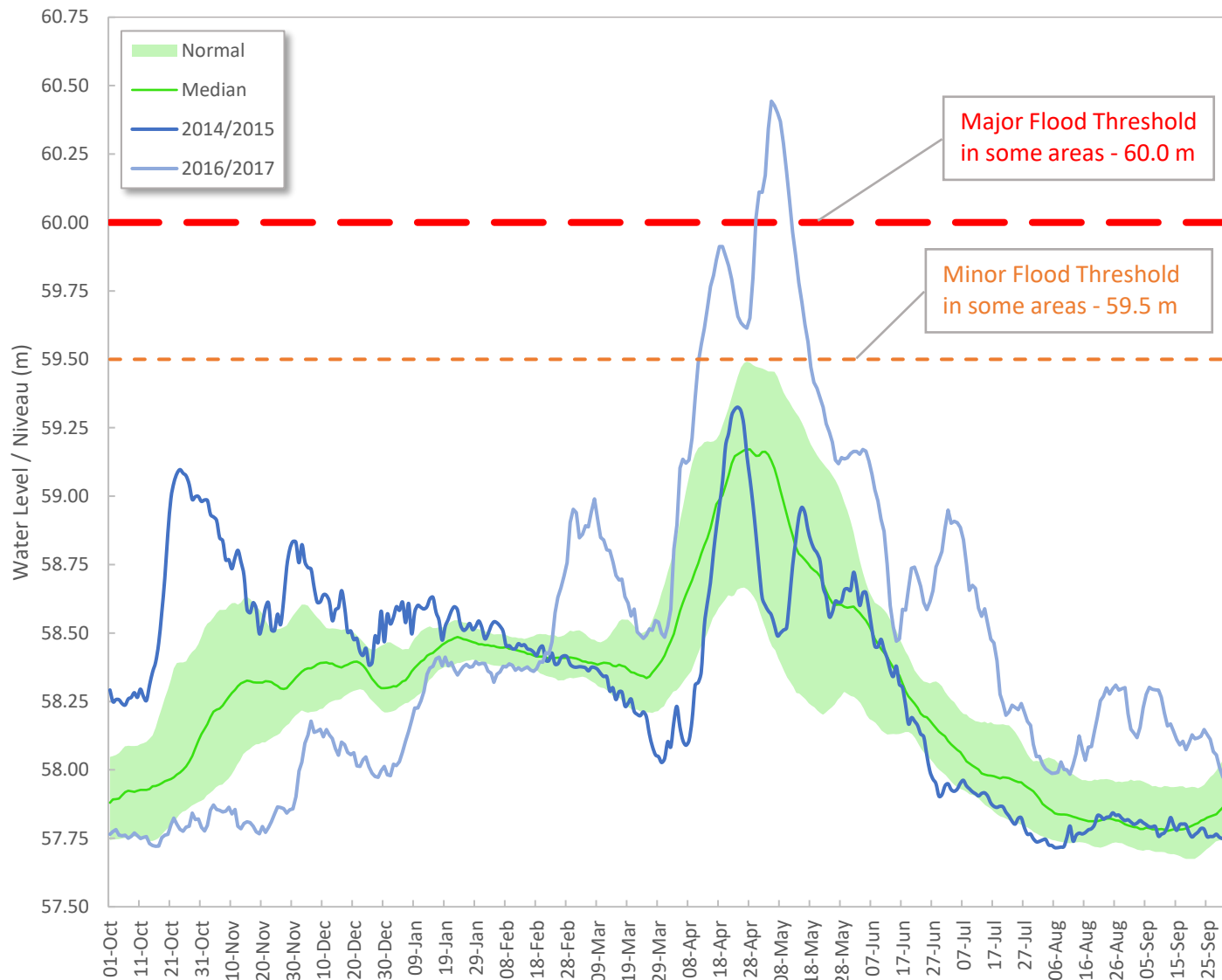


Ottawa River Britannia/Lake Deschenes - Water level in metres (Figure 1 of 2)



Water levels and flows during the fall vary according to weather conditions that affect upriver conditions.

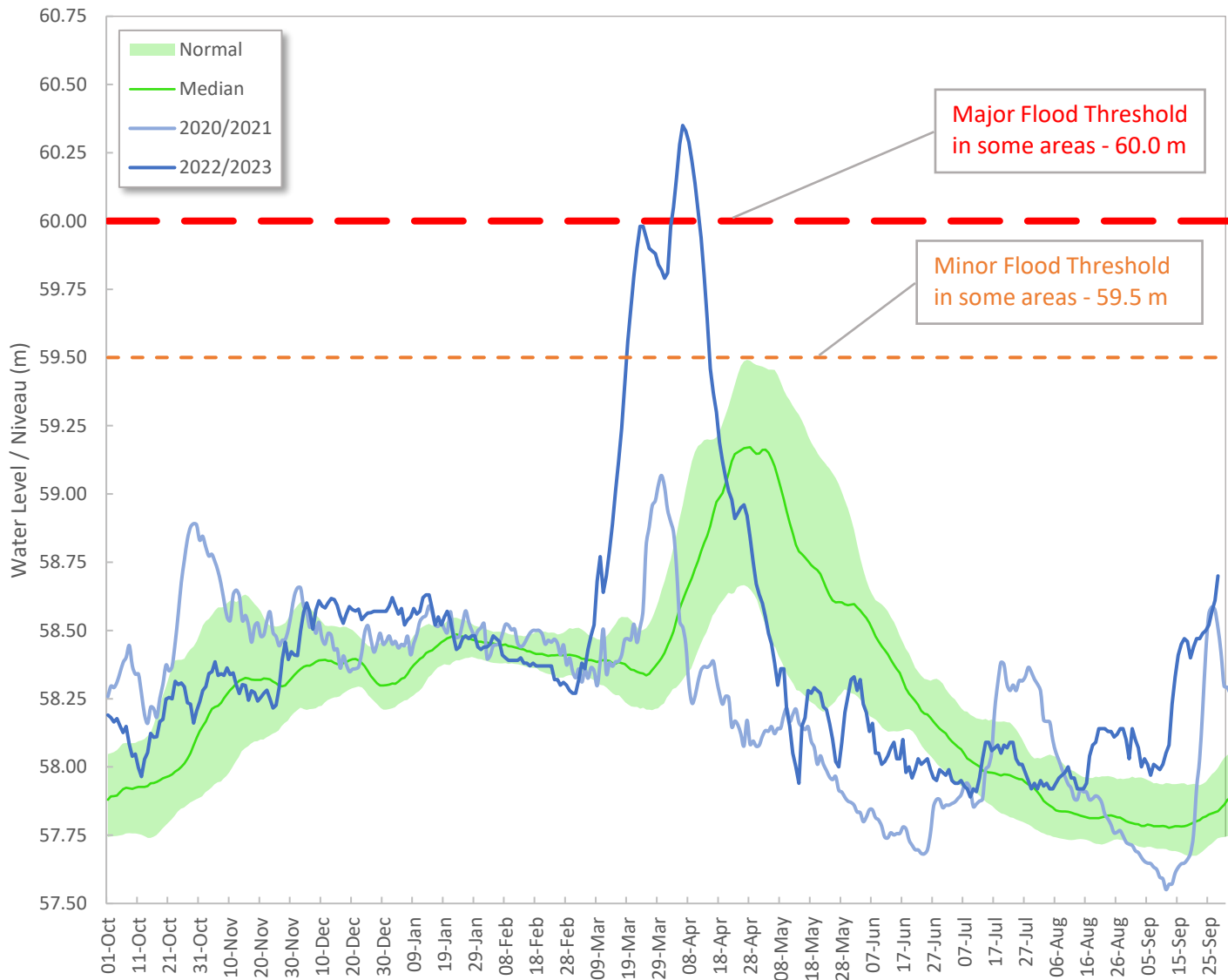
Dry fall conditions (2016) can be followed by very wet spring conditions (2017). Likewise above normal fall levels (2014) can be followed by normal spring conditions (2015).

The severity of a spring flood is not linked to the conditions over the preceding fall.

Flooding in low lying areas* can occur below minor flood threshold.

*Areas that are regularly flooded during high-flow periods.

Ottawa River Britannia/Lake Deschenes - Water level in metres (Figure 2 of 2)



Water levels and flows during the fall vary according to weather conditions that affect upriver conditions.

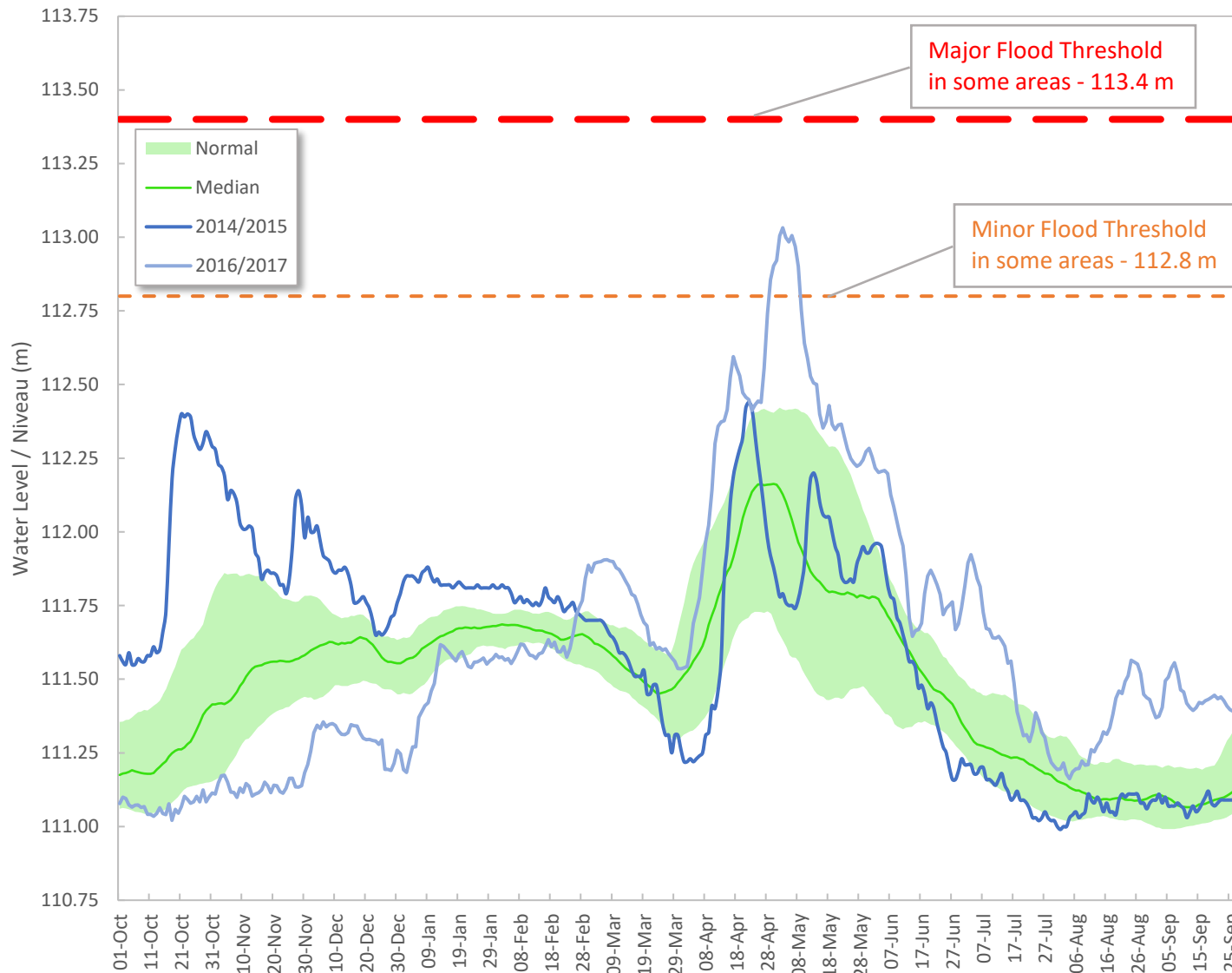
Normal fall conditions (2022) can be followed by very wet spring conditions (2023). Likewise above normal fall levels (2020) can be followed by below normal spring conditions (2021).

The severity of a spring flood is not linked to the conditions over the preceding fall.

Flooding in low lying areas* can occur below minor flood threshold.

*Areas that are regularly flooded during high-flow periods.

Ottawa River at Pembroke - Water level in metres (Figure 1 of 2)



Water levels and flows during the fall vary according to weather conditions that affect upriver conditions.

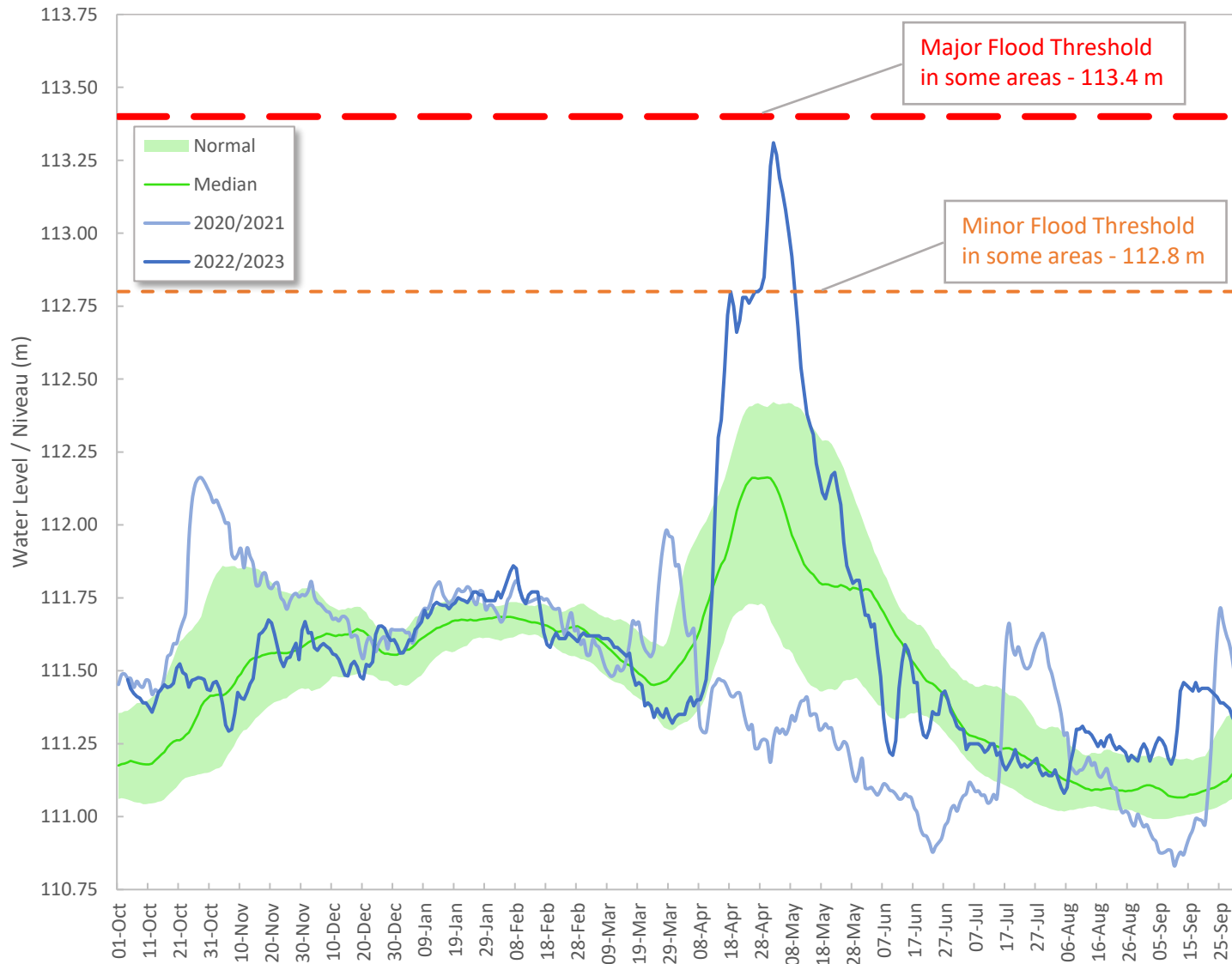
Dry fall conditions (2016) can be followed by very wet spring conditions (2017). Likewise above normal fall levels (2014) can be followed by normal spring conditions (2015).

The severity of a spring flood is not linked to the conditions over the preceding fall.

Flooding in low lying areas* can occur below minor flood threshold.

*Areas that are regularly flooded during high-flow periods.

Ottawa River at Pembroke - Water level in metres (Figure 2 of 2)



Water levels and flows during the fall vary according to weather conditions that affect upriver conditions.

Normal fall conditions (2022) can be followed by very wet spring conditions (2023). Likewise above normal fall levels (2020) can be followed by below normal spring conditions (2021).

The severity of a spring flood is not linked to the conditions over the preceding fall.

Flooding in low lying areas* can occur below minor flood threshold.

*Areas that are regularly flooded during high-flow periods.